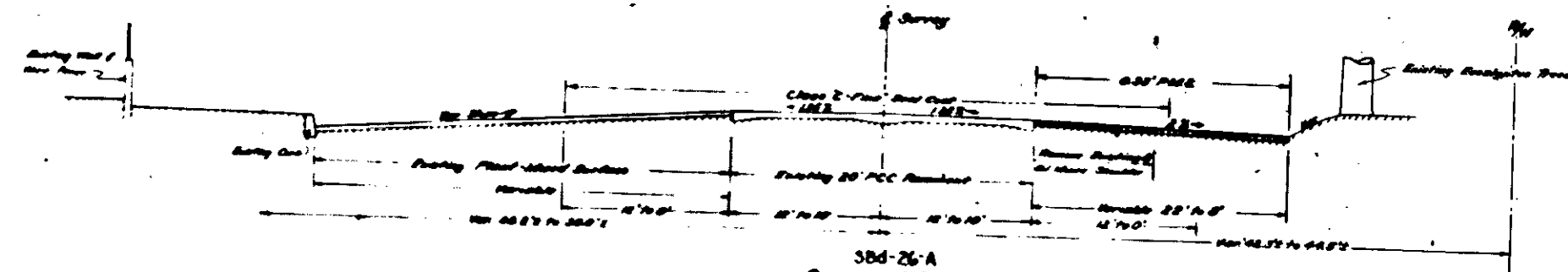


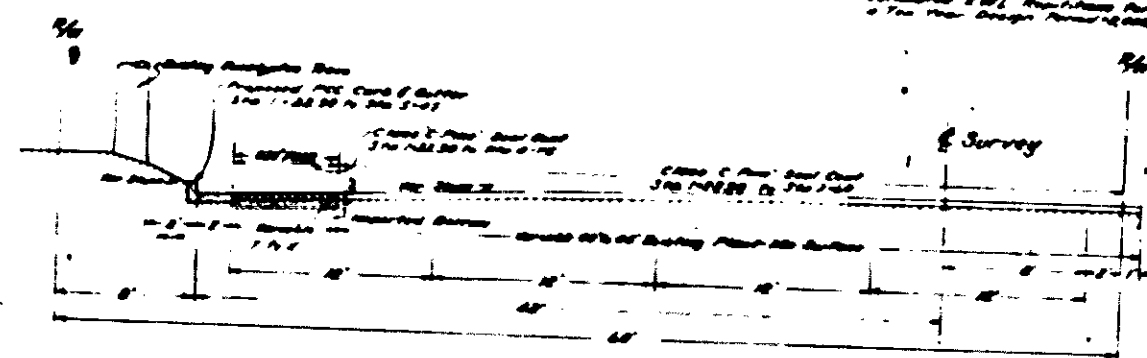
DESIGN CLASSIFICATION
 North on E St 1600-30-M-30
 South on E St 000-30-M-30
 Colton Ave 1200-30-M-30

| | |
|-------------|---------------|
| Sheet | 2 |
| Project | 26,431 A, 564 |
| Division | VII |
| Section | 384 |
| Sub-section | 2 |
| Sheet | 7 |

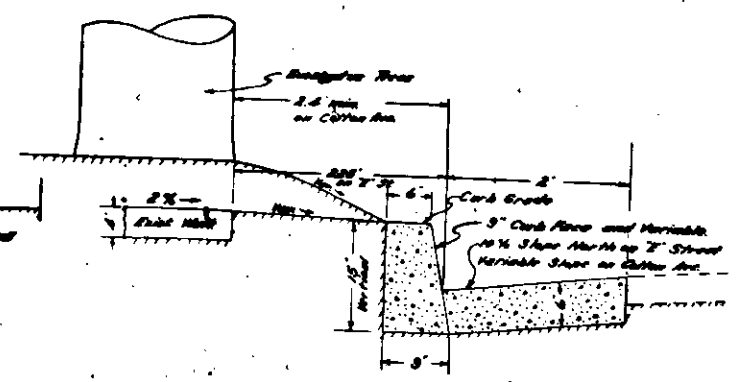
B. D. Sullivan
 June 20, 1949
 State Highway Engineer
 Civil Engineer License # 2084



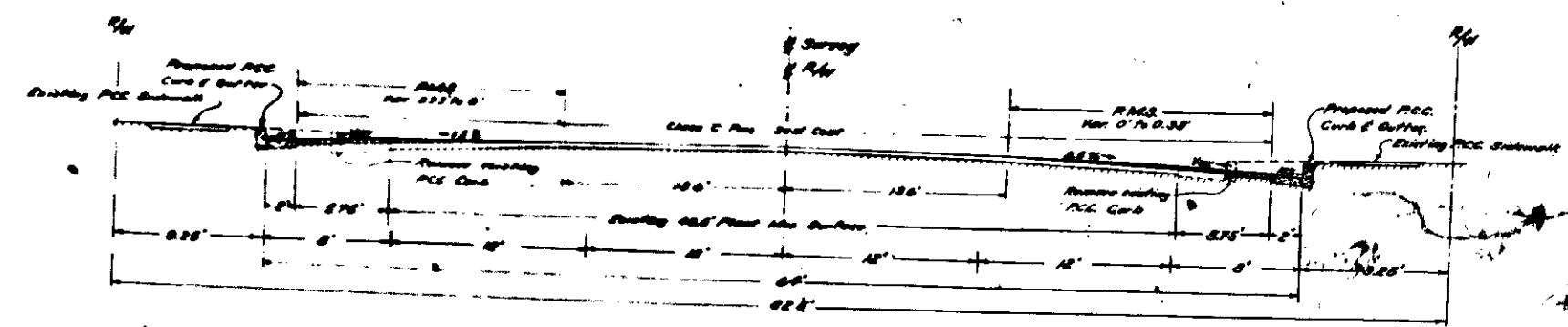
Sbd-26-A
 SOUTH ON E STREET
 Sta 1+80 to Sta 5+30
 Estimated 20% Provision for
 Two Year Design Period



SOUTH WEST ON COLTON AVENUE
 Sta 7+230 to Sta 8+75
 Estimated 20% Provision for
 Two Year Design Period



DETAIL OF P.C.C. CURB & GUTTER
 E St & Colton Ave.
 SCALE: 1"=1'



Sbd-43-5Bd
 NORTH ON E STREET
 Sta 0+3025 to Sta 3+77
 Estimated 20% Provision for
 Two Year Design Period

TYPICAL CROSS SECTIONS

Scale: 1"=5'
 (Sbd-26-A, Sbd-43-5Bd)
 of Sbd-26

Recommended June 17, 1949

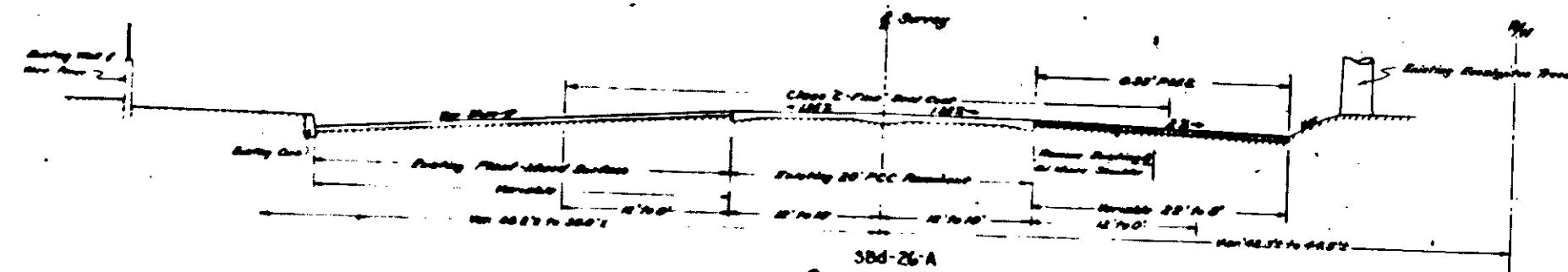
Tom Callie
 Asst. State Highway Engineer
J. M. [Signature]
 Asst. State Highway Engineer

534 ON NORTH

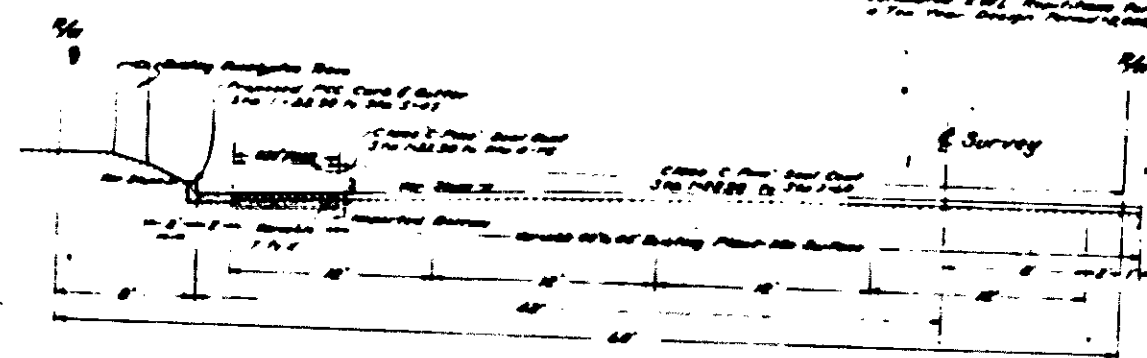
DESIGN CLASSIFICATION
 North on E St 1600-30-M-30
 South on E St 000-30-M-30
 Colton Ave 1200-30-M-30

| | |
|---------|---------------|
| Sheet | 2 |
| Project | 26,431 A, 564 |
| Scale | 1"=5' |

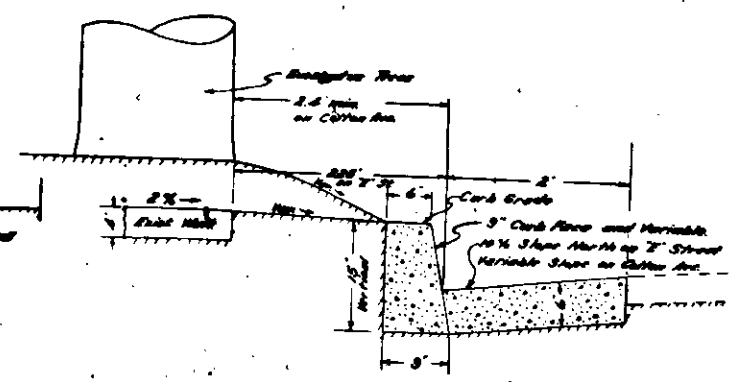
B. D. Sullivan
 June 20, 1949
 State Highway Engineer
 Civil Engineer License # 2084



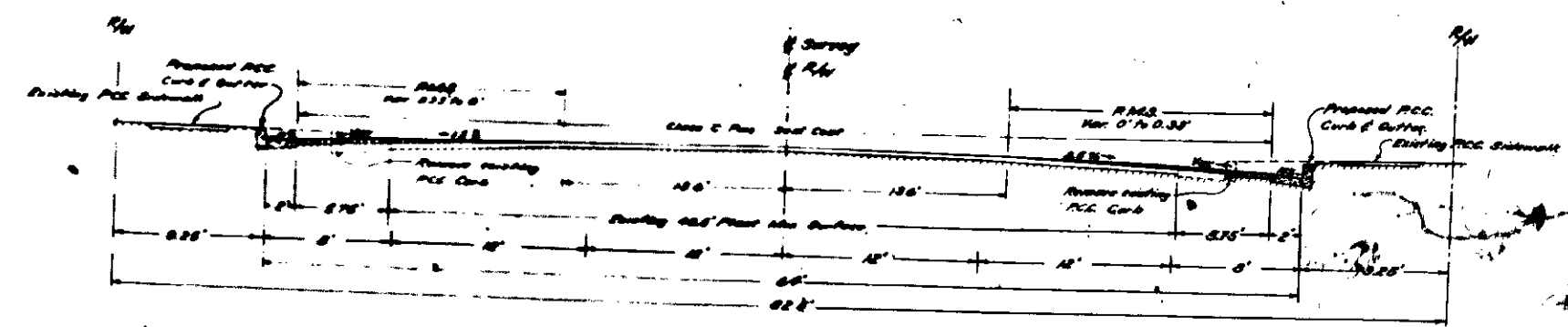
Sbd-26-A
 SOUTH ON E STREET
 Sta 1+80 to Sta 5+30
 Estimated 20% Provision for
 Two Year Design Period



SOUTH WEST ON COLTON AVENUE
 Sta 7+230 to Sta 8+75
 Estimated 20% Provision for
 Two Year Design Period



DETAIL OF PCC CURB & GUTTER
 E St & Colton Ave.
 SCALE: 1"=1'



Sbd-43-Sbd
 NORTH ON E STREET
 Sta 0+3025 to Sta 3+77
 Estimated 20% Provision for
 Two Year Design Period

TYPICAL CROSS SECTIONS

Scale: 1"=5'
 (Sbd-26-A, Sbd-43-Sbd)
 of Sbd-26

Recommended June 17, 1949

R. M. Callie
 Asst. State Highway Engineer
J. M. [Signature]
 Asst. State Highway Engineer

534 ON NORTH